

# State of Wyoming Corner Record

(In compliance with the CORNER PERPETUATION AND FILING ACT, Wyoming Statutes, 2013 Section 33-29-901 through 33-29-910, and the Rules and Regulations of the Board of Professional Engineers and Professional Land Surveyors)

Reverse side of this form may be used if more space is needed.

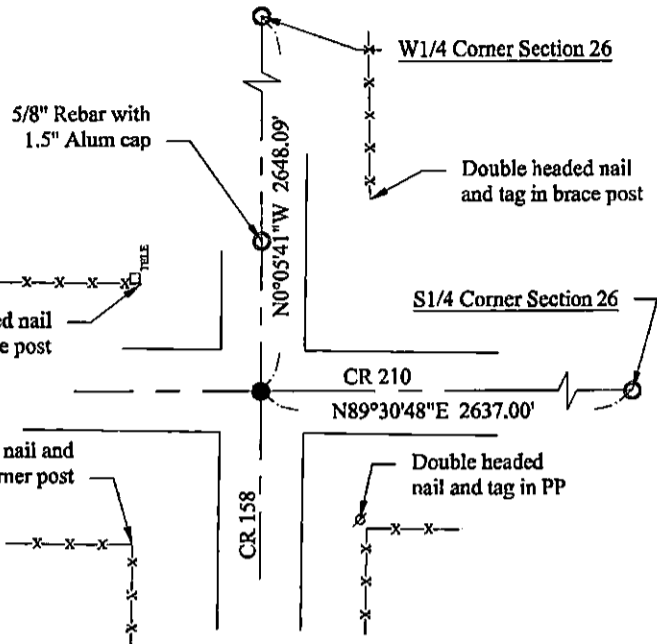
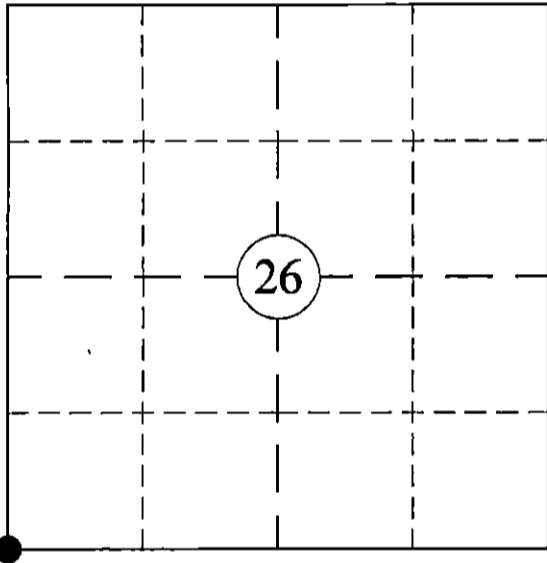
Record of original survey and citation of source of historical information (if corner is lost or obliterated). Description of corner monumentation evidence found and /or monument and accessories established to perpetuate the location of this corner. Sketch of relative location of monument, accessories, and reference points with course and distance to adjacent corner(s) (if determined in this survey). Method and rationale for reestablishment of lost or obliterated corner.

**SW Corner Section 26, T14N, R61W**

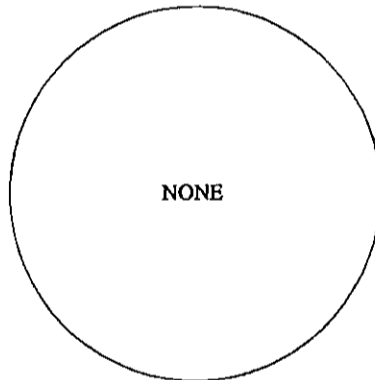
In September 1871 J. Wesley Hammond set a limestone 18X11X8. Larry T. Perry, LS 3047, found a 5/8" Rebar in September 1986 (Book 1233, page 878). Found PK Nail in asphalt in CL CR 210.

Measured ties: 5/8" Rebar with 1.5" Alum cap bears N0°05'41"W at 40.00'; Double headed nail and tag in PP bears S37°56'E at 44.5'; Double headed nail and tag in corner post bears S40°06'W at 53.5'; Double headed nail and tag in brace post bears N48°23'W at 43.2'; Double headed nail and tag in brace post bears N29°51'E at 58.9'; Top center telephone pedestal bears N48°11'W at 45.4'; Cl CR 158 bears E at 0.5'.

### Monument Location



All bearings shown are Wyoming State Plane East Zone NAD83 (2011) Grid bearings. All distances are earth surface.



### Monument Inscription

Date of Field work: 06/8/2022

Office Reference: 2022-17

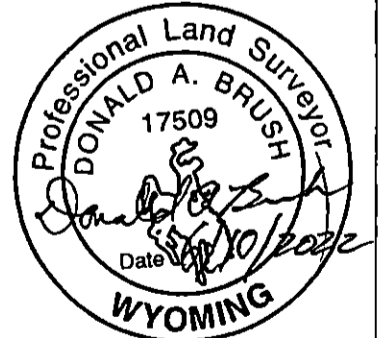
### Cross Index Plat

	1	2	3	4	5	6	7	8	9	10	11	12	13	14	15	16	17	18	19	20	21	22	23	24	25
A																									
B																									
C		6		5		4		3		2		1													
D																									
E																									
F																									
G			7		8		9		10		11		12												
H																									
J																									
K																									
L			18		17		16		15		14		13												
M																									
N																									
O																									
P			19		20		21		22		23		24												
Q																									
R																									
S																									
T			30		29		28		27		26		25												
U																									
V																									
W																									
X			31		32		33		34		35		36												
Y																									
Z																									
	1	2	3	4	5	6	7	8	9	10	11	12	13	14	15	16	17	18	19	20	21	22	23	24	25

Firm/Agency, Address

Donald A Brush  
dba Panhandle Land Surveying  
870 SB Road  
Morrill, NE 69358  
308-247-2602

SEAL & SIGNATURE



This corner record was prepared by me or under my direction and supervision.



RECP #: 839538  
RECORDED 6/21/2022 AT 12:11 PM BK# 2793 PG# 171  
Debra K. Lee, CLERK OF LARAMIE COUNTY, WY PAGE 1 OF-1

Corner Name SW Section 26, T 14 N, R 61 W, 6th P.M., County Laramie

Cross-Index No.: V-17.